

Marksheffel Road Improvements

Construction Update

Oct. 4, 2023

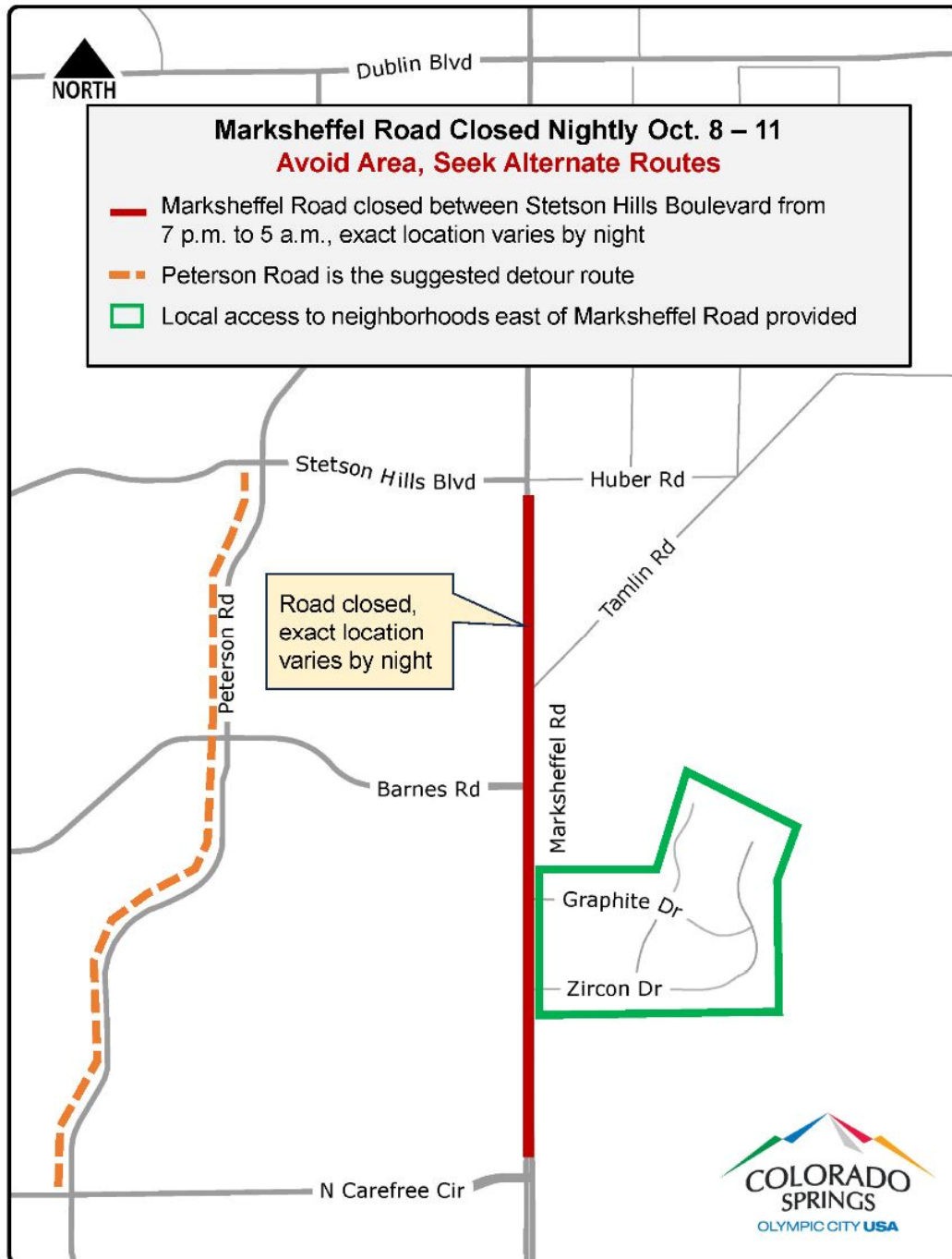
Marksheffel Road to close nightly from Oct. 8 - 11 for traffic pattern changes and water pipeline installation

Marksheffel Road will close to through traffic at various points between Stetson Hills Boulevard/Huber Road and North Carefree Circle overnights from Oct. 8 - 11. **Unless absolutely necessary, avoid travel on Marksheffel Road nightly from 7 p.m. - 5 a.m. between Stetson Hills Boulevard and North Carefree Circle. Please use alternate routes during this time.**

During these safety closures, crews will restripe the highway and place new water pipeline underneath Marksheffel Road. Emergency responder access will be provided. Travelers should expect new traffic patterns throughout the week. One lane in each direction on Marksheffel Road will be open daily from 5 a.m. - 7 p.m.

The closures are weather-dependent and the schedule may change. Message boards on the corridor and the project hotline (719-645-4055) will provide the most up-to-date information.

All signed detour routes utilize Peterson Road, which is less than one mile west of Marksheffel Road. Antelope Ridge Drive is not a recommended detour route.



Marksheffel Road full closure map. Peterson Road is the signed detour route.

Nearby neighborhood access east of Marksheffel Road will be provided from the north or south during full closures

Neighborhoods east of Marksheffel Road with entrances off of Graphite Drive and Zircon Drive will always have access during the Marksheffel Road closures. Access will be provided from the south during the first two nights and from the north for the last two nights. The initial access schedule below may change, so please follow crew instructions, signs and markings.

- Sunday, Oct. 8 from 7 p.m. to Monday, Oct. 9 at 5 a.m.: Local access will be provided from the south at the Marksheffel Road / North Carefree Circle intersection.
- Monday, Oct. 9 from 7 p.m. to Tuesday, Oct. 10 at 5 a.m.: Local access will be provided from the south at the Marksheffel Road / North Carefree Circle intersection.
- Tuesday, Oct. 10 from 7 p.m. to Wednesday, Oct. 11 at 5 a.m.: Local access will be provided from the north at the Marksheffel Road / Barnes Road intersection.
- Wednesday, Oct. 11 from 7 p.m. to Thursday, Oct. 12 at 5 a.m. Local access will be provided from the north at the Marksheffel Road / Barnes Road intersection.

All work is weather-dependent, and schedule may change.

About the Project

Improving the existing two-lane section of Marksheffel Road between North Carefree Circle and Dublin Boulevard is a City priority. The first phase of construction focuses on the 1.2-mile section between North Carefree Circle and Tamlin Road.

More information, including a map of the planned improvements, is available on the [Marksheffel Road Improvements project web page](#).

Stay Connected!

Project web page: coloradosprings.gov/marksheffel

Hotline: 719-645-4055

Email: marksheffel@workzone.info

Text alerts: Text IMPROVE to 866-762-3640 to receive traffic alerts

To receive construction updates directly, send an email to marksheffel@workzone.info and ask to be added to the project email list. Construction updates will be sent by email every other week or more frequently as needed.